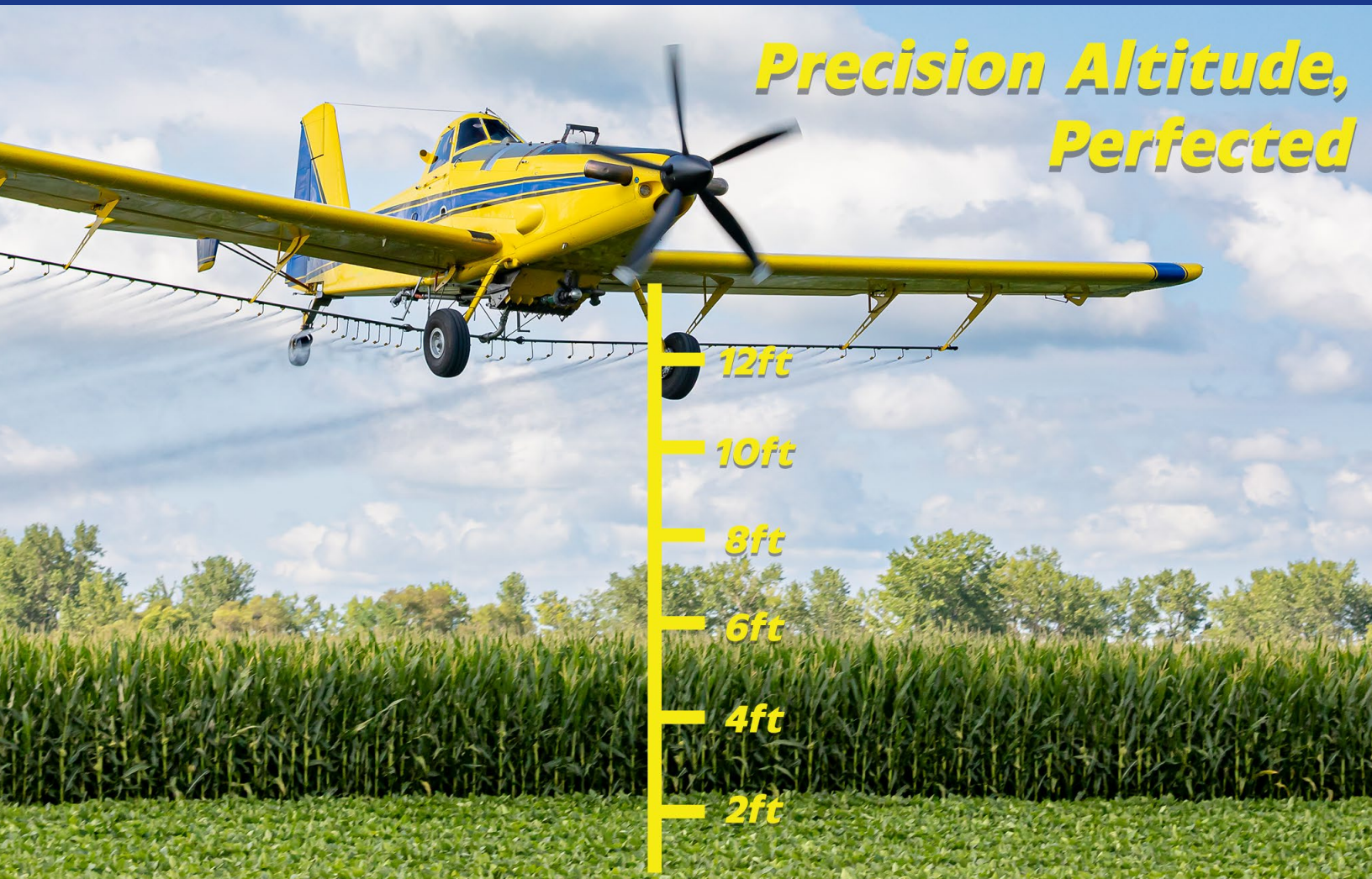


SATLOC[®] **AgLaser**

Installation Guide 875-0400-000 Rev A1



*Precision Altitude,
Perfected*

Overview: This installation guide lists all the Satloc AgLaser kits and provides instructions on installing.

Read this manual thoroughly before beginning the installation.
If you have any questions, contact your local dealer or Satloc Customer Service.

This device complies with part 15 of the FCC Rules. Operation is subject to the following two conditions:

1. This device may not cause harmful interference, and
2. this device must accept any interference received, including interference that may cause undesired operation.

Copyright Notice

Satloc, a company of Texas Transland, LLC

Copyright Satloc © (2026). All rights reserved.

No part of this manual may be reproduced, transmitted, transcribed, stored in a retrieval system or translated into any language or computer language, in any form or by any means, electronic, mechanical, magnetic, optical, chemical, manual or otherwise, without the prior written permission of Satloc.

Latest Version of the Satloc AgLaser Installation Guide

Satloc is dedicated to providing updated versions of installation guidebooks for its customers. For the latest version of the AgLaser Installation Guide, visit www.Satloc.com.

Notice to Customers

Contact your local dealer for technical assistance. To find an authorized dealer near you, visit www.Satloc.com.

Transland

1206 Hatton Rd.

Wichita Falls, TX 76302

Phone: 940-687-1100

Fax: 940-687-1941

www.TranslandLLC.com

Documentation Feedback

Satloc, a division of Transland, is committed to the quality and continuous improvement of our products and services.

We encourage and appreciate any feedback regarding this guide and any of our products by writing to the following email address: Sales@Translandllc.com.

Table of Contents

Getting to know your Satloc Ag Laser

1.1 Parts List pg 2

1.2 Planning the Installation pg 2

2.1 Preparation and Cable Routing pg 4

2.2 Final Mounting pg 5

3.1 Technical Specifications pg 7

Warranty Information

GETTING TO KNOW THE SATLOC AG LASER

Precision Height Awareness for Every Pass

The Satloc AgLaser gives aerial applicators real-time, altitude data confirming precise spray height across every contour. Unlike stand-alone sensors, the Satloc AgLaser integrates directly with the Satloc Falcon™ Falcon Pro™ and Bantam 2™ GPS systems, feeding height data seamlessly into the Falcon and Bantam 2 software. No extra displays, just smooth, integrated precision where you already work.

Native Falcon Integration: Plug-and-play connection with the Satloc Falcon system; no external interface required.

Native Bantam 2 Integration: Plugs directly into the Bantam 2 system and is externally powered by the aircraft.

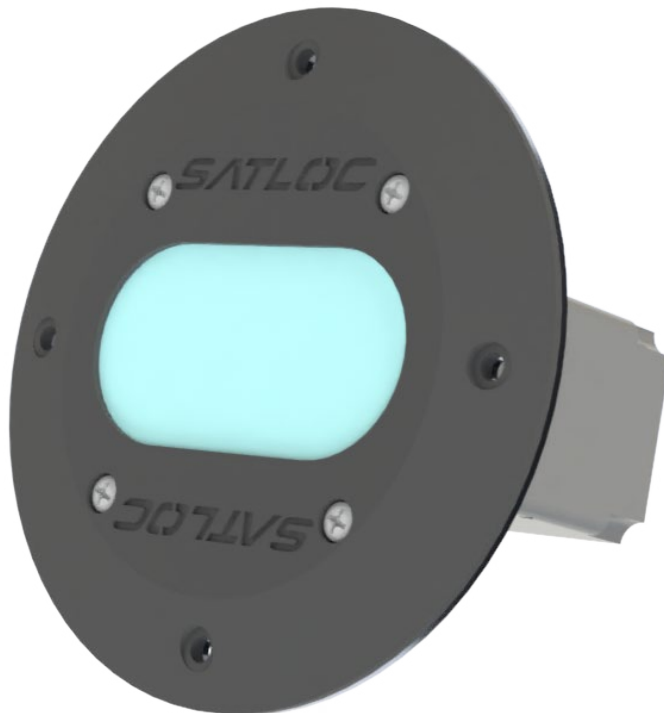
Real-Time Height Feedback: View continuous live data through three user-selectable options: Lightbar Text Field , Lightbar Chasing Lights Feature, and Cockpit Live Screen

AgLaser Settings Options: choose whether to log height data with applied map or simply view it live on screen for every pass.

Extended Range Awareness: With a range up to 900 ft, pilots can also monitor ferrying height in real time.

Dependable by Design

Every detail of the Satloc AgLaser™ is engineered for harsh agricultural environments. Its solid-state sensor technology delivers reliable readings across crop canopies, water, and bare ground, helping pilots maintain precise application height information.





Section 1: Getting Started

1.1 Parts Lists

1.2 Planning the Installation

The Satloc Ag Laser features a streamlined, plug-and-play design for quick installation with the Satloc Falcon and Falcon Pro systems, with each kit including the appropriate connector. For use with the Satloc Bantam 2, installation will require aircraft power and proper grounding.



Read this entire manual before beginning installation. Failure to follow instructions in this manual could void your warranty.

1.1 PARTS LISTS

Each kit is specifically configured for the selected aircraft (Air Tractor or Thrush) and compatible Satloc GPS system (Satloc Falcon/Pro or Satloc Bantam 2).

Table 1-1: Satloc AgLaser Configurations for Use with Satloc Falcon and Falcon Pro Systems

Description	Part Number
Falcon; Air Tractor AgLaser	900-2122-000
Falcon; Thrush AgLaser	900-2123-000

Table 1-2: Satloc AgLaser Configurations for Use with Satloc Bantam 2 Systems

Description	Part Number
Bantam 2; Air Tractor AgLaser	900-2124-000
Bantam 2; Thrush AgLaser	900-2125-000

1.2 PLANNING THE INSTALLATION



- **Turn off aircraft power before connecting or disconnecting cables. Failing to do so can damage the system.**
- Plan your installation by considering the following: 1) cable lengths, 2) clearance space, 3) power source, 4) aircraft structure, and 5) visibility.
- Consider using existing hardware and hardware locations. Avoid drilling holes that may damage other equipment (such as structural frame members, electrical cables, or fluid lines).
- Do not obstruct the view of, or access to, other instruments or the flying visibility of the operator.
- Do not route cables alongside power generator wire and other high-noise electric sources. This will cause interference.

Section 2: Mounting the AgLaser

2.1 Preparation and Cable Routing

2.2 Final Mounting the AgLaser

2.1 PREPARATION AND CABLE ROUTING

Where hardware such as screws are not provided for mounting or installation, you will need to provide the hardware appropriate to your specific needs.

Step 1: Access Fuselage Area

Remove the necessary fuselage skins to gain access to the area above the left-hand wing and the side of the cockpit.

Step 2: Access Wing Interior

Remove the appropriate under-wing inspection plate. Typically, this will be the second inspection plate outboard from the fuselage.



Step 3: Position AgLaser Unit (Temporary)

Temporarily suspend the SATLOC AgLaser under the wing using a small Ty-Rap® (or equivalent) through the mounting screw holes. (This helps support the unit while routing the cable).

Step 4: Route Cable

Route the plug end of the AgLaser cable from the selected inspection plate through the wing. Use the existing grommeted hole in the inner closed-out rib to pass the cable out of the wing toward the fuselage. Connect it to the Satloc GPS Comm Cable “Ag Laser” plug.

Applicable cable part numbers:
050-2203-000 (Satloc Falcon Pro)
050-2213-000 (Satloc Falcon)
051-0244-000# (Satloc Bantam 2)

For the Satloc Bantam 2 system:

A connection to aircraft power is required. Connect the ground wire to the aircraft ground bus. Connect the positive (+) lead to a 24 VDC power source through appropriately sized 0.5 amp fused protection.

2.2 FINAL MOUNTING

Step 1

Remove the temporary Ty-Rap®.



Step 2

Secure the SATLOC AgLaser in the inspection opening using appropriately sized screws.

Step 3

Secure and support wiring in accordance with AC 43.13-1B, Chapter 11, Section 11-13, including:

- Clamp/support spacing at intervals not exceeding 24 inches
- Maintain minimum bend radius of 10× cable diameter (unless otherwise specified by manufacturer)
- Provide chafe protection at all structure contact points





Section 3: Technical Specs

3.1 Technical Specifications

3.1 TECHNICAL SPECIFICATIONS

Feature	Specification	Notes
Construction	Aluminum, Delrin®, & Stainless Steel.	Provides superior durability
Protective Lens Cover	Separate sealed glass lens cover, with gasket.	Shields sensor from harsh weather, debris, and pressure washing
Protection Class	IP67 Dustproof & Waterproof	
Effective Range	900 ft (274 m)	
Accuracy	1% with centimeter-level resolution	
Repetition Rate	10 Hz for instantaneous response.	
Aircraft Fit	Mounts within the under-wing spar inspection hole.	For Air Tractor & Thrush Aircraft.
Safety	Class 1 eye-safe laser.	EN60825 Compliant
Connectivity	Falcon/Pro & Bantam 2 GPS systems.	Plug-and-Play connection for Falcon. Bantam 2 requires additional connections.
Power	5-24 v DC with low current draw	
Wavelength	905 nm	
Operating Temperature	13°F to 140°F (-25°C to +60°C)	
Protocol	RS-232	The serial interface continuously transmits altitude readings
Weight	7.8 oz (222 g)	
Firmware/Software	Falcon LPC 1.2.1 or Greater, Falcon Software 1.12 or Greater, Bantam 2 12.3.53.153 or Greater	Minimum Required

WARRANTY INFORMATION

Transland (to include all brands owned, manufactured, or distributed through Transland) warrants our new products to be free from defects in material and workmanship under normal and intended use and service for a period of one (1) year.

Our obligation under warranty shall be to repair or replace any product which is returned to Transland and which, upon inspection by Transland, is proven to be defective. Transland will void the warranty if the product is damaged by misuse, improper maintenance, accident, repair by non-authorized personnel, tampering, removal/defacing of the serial number, or if the product is used for anything other than the intended purpose. Items such as Seals, Gaskets, or Bearings that require replacement during routine maintenance are excluded from warranty coverage if not returned within an initial ninety (90) day period.

The warranty period commences from the later of:

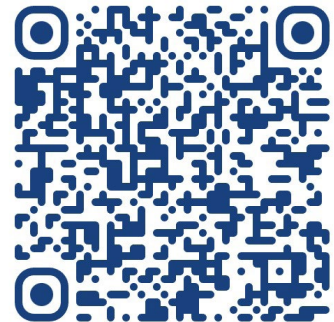
- (a) the date a Transland product is originally installed (and/or registered in the warranty database),
- (b) the date of purchase, or
- (c) the date of shipment from Transland.

If you are unable to provide documentation supporting either (a) or (b), the Warranty Period commencement date will be determined by Manufacturer, in its sole and absolute discretion, based upon the product Serial Number or Transland Purchase Order shipping records.

All Satloc parts are to be registered using the online Transland warranty registration form at the time of customer purchase. Registered parts will expedite the repair/replacement process. Use this section to record your Part Number, Serial Number, and Date of Manufacture. You may also take a photo of your part label and use it when completing your online warranty registration.

To ensure warranty coverage, please visit Satloc.com and register your new Satloc AgLaser under the Warranty tab. This step is important to protect your product in the event a replacement is needed.

Scan this QR code to go directly to our warranty registration page.



Technical Support

To find an authorized dealer near you, visit www.satloc.com.

Satloc

support@satloc.com

Call or Text 833-4-Satloc

(833) 472-8562

www.satloc.com

1206 Hatton Rd.

Wichita Falls, TX 76302

The logo for SATLOC, featuring the word "SATLOC" in a bold, italicized, white sans-serif font with a registered trademark symbol (®) to the right. The logo is set against a solid dark blue background.